



Scaling-up Nomad Media's **asset management** platform with **advanced AI search** functionality.

“The partnership between Nomad Media and Mobius Labs ushers in a new Artificial Intelligence era where powerful video and image analysis along with speech to text conversion is the foundation of every content catalogue.”

Adam Miller

Co-founder & CEO, Nomad Media

Introduction

Nomad Media is a cloud-native content management and content distribution platform that seamlessly merges cloud-based asset management with the power of AI/ML into one unified, easy-to-use system.

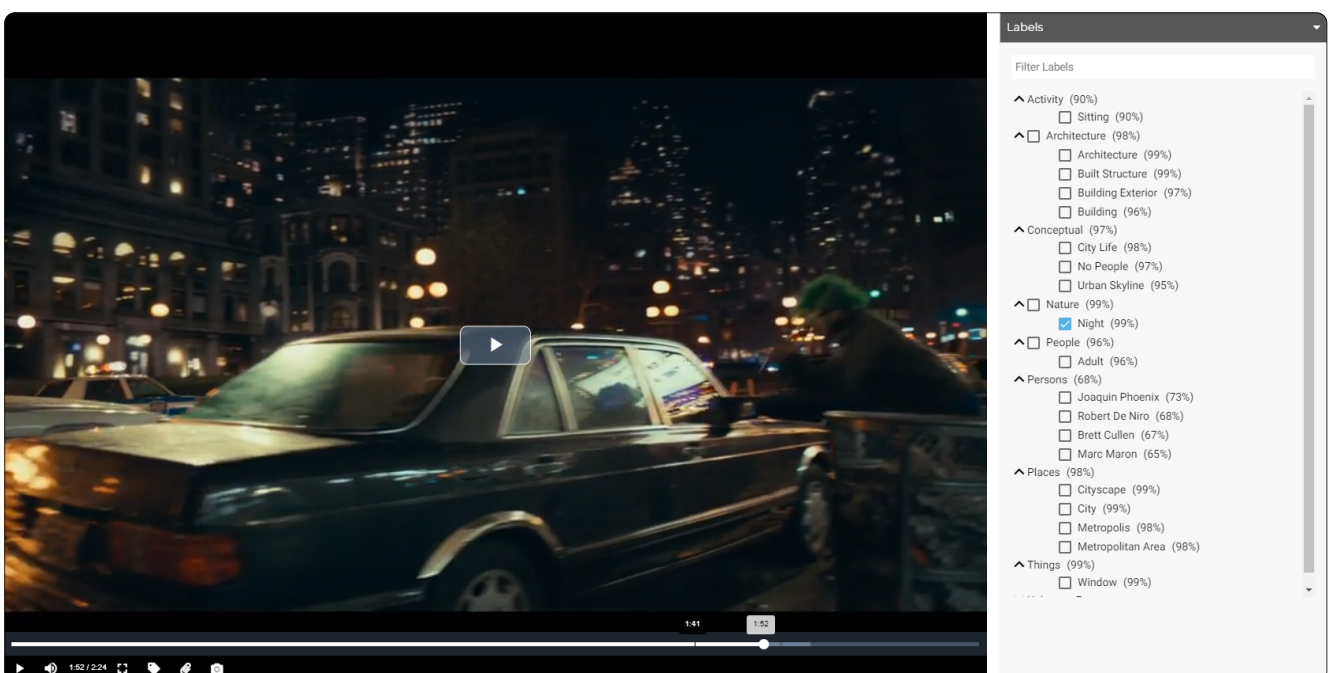
Nomad Media can intake and distribute an unlimited number of simultaneous video streams and also offers live channel management and broadcasting, stream scheduling, DRM support, deep search, interoperability with Adobe Creative Suite, and many other advanced features to support video operations.

The Challenge

Video content libraries are expanding at a rapid pace and there is more and more pressure to understand what is contained in these vast video archives.

AI search models that are priced per minute can quickly become very expensive for large libraries and so Nomad Media were looking for a technology partner that could offer a scalable yet cost-effective solution that could be easily integrated within their platform.

In addition they were looking to offer their customers the option of premium AI services including advanced facial recognition and robust, automatic video and image labeling.



Solution

Easy integration of the Mobius Labs SDK through the use of API's enabled Nomad Media to quickly offer new, advanced AI capabilities within their platform including:

Automatic Video and Image Labeling

Analyzing new videos and images with human-like perception and automatically tagging them with precise keywords.

Instant access to over 6,000 pre-trained, standard concepts

Recognizing objects, people, concepts and more.

Face Detection & Celebrity Recognition

With 11,000 public figures built in, enabling advanced search for specific people and demographics in both videos and images plus the ability to add new people and easily expand the face database as required.

Segment Detection

To process videos quickly and efficiently by capturing the best scenes and optimizing workflow efficiencies.

Results

“The Mobius Labs SDK has enabled Nomad Media to offer our clients the option of premium AI services that truly democratize the use of AI . Now organizations of all sizes can have superior, cost-effective and scalable discovery, deep search and auto curation of content catalogues and programming.

“In addition, this new AI powered catalog foundation will future proof an organization's content for emerging and innovative new AI services.”

Adam Miller

Co-founder & CEO, Nomad Media